



CERTIFICATE OF ANALYSIS

20 Martin Ross Avenue, North York, ON, M3J 2K8, CANADA
Tel: (416) 665-9696, Fax: (416) 665-4439
Email: orders.trc@lgcgroup.com Website: www.trc-canada.com

1. Identification

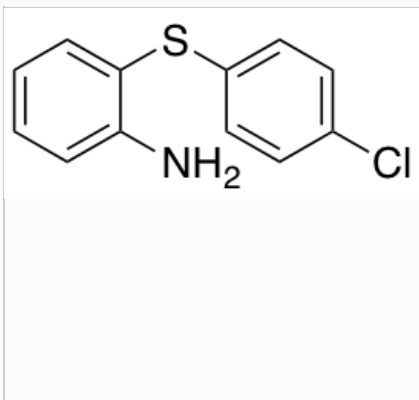
Catalogue Number: C613208

CAS Number: 37750-29-1

Product: 2-[(4-Chlorophenyl)thio]aniline
(~50% in Toluene)
(DISCONTINUED)

Synonym: 2-[(4-Chlorophenyl)thio]benzenamine; 2-Aminophenyl 4-chlorophenyl Sulfide; 2-[(4-Chlorophenyl)sulfanyl]aniline; o-(p-Chlorophenylthio)aniline;

Structure:



Molecular Formula:

C₁₂H₁₀ClNS

Molecular weight:

235.73

Source of Product:

N/A

Solubility:

Chloroform (Sparingly),
Methanol (Sparingly), Toluene
(Soluble)

Lot Number: 711622685-2-1

Purity: 96%

Shipping Condition: This Product Is Stable To Be
Shipped At Room Temperature

Storage Condition: 4°C

2. Warning

Warning 1:

Warning 2:

Warning 3:

3. Analytical Information

Tests:	Specifications:	Results:
Appearance	Orange to Brown Oil	Clear Orange to Brown Oil
NMR	Conforms to Structure	Conforms
MS	Conforms to Structure	Conforms
C NMR	Conforms to Structure	Conforms

Additional Information: Contains: ~41.5% Toluene

Purity is based on the analytical results of the tests performed. NMR and Elemental Analysis (if available) may have an accuracy of $\pm 2\%$. Isotopic purity is based on mass distribution observed. The contents of the specifications are subject to change without advance notice, and the specification values displayed here are the most up to date values.

4. Signatures

Reviewed By	Reviewed By	C of A Approved By	Test Date	Retest Date
Swathi Reddy	Toni Rantanen	Chanell Chu	7/5/2022	7/3/2026